

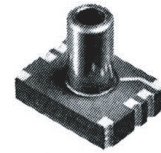


# Pressure Sensor

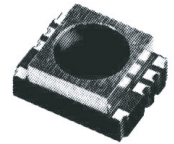
Our pressure sensors are fabricated with an advanced semiconductor micromachining process, to meet a variety of customer requirements. The high sensitive and high precision sensor is available for any applications.

## ■ Features

- Low expansion ceramic package for high precision and reliability.
- Small in size, low in price
- Surface mountable, leadless construction
- Low power consumption

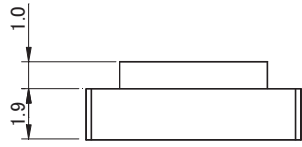
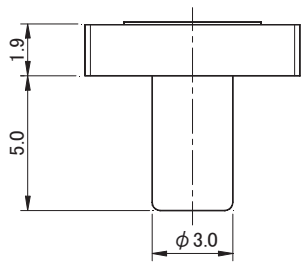
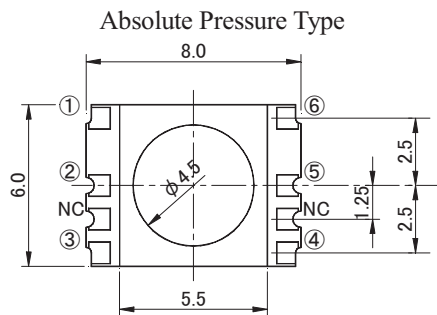
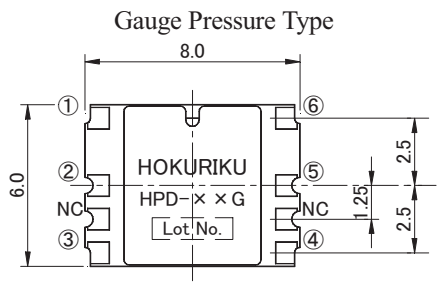


Gauge Type



Absolute Type

## ■ Construction



Terminal

①	+INPUT
②	-OUTPUT
③	-INPUT
④	-INPUT
⑤	+OUTPUT
⑥	+INPUT

Terminal

①	+INPUT
②	+OUTPUT
③	-INPUT
④	-INPUT
⑤	-OUTPUT
⑥	+INPUT

※Pressure guide port available

## ■ Specifications

Item	Rating	Unit	Note
<b>Max. Rating</b>			
Pressure	2 times of rated pressure	kPa	
Drive Current	1	mA	A fixed voltage drive can cope with it, too.
Operating Temperature Range	-30~85	°C	
Storage Temperature Range	-40~100	°C	
<b>Operating Condition</b>			
Pressure Range	±50, ±100, ±500	kPa	Absolute pressure type : -50 to +10kPa.
Drive Current	0.5	mA	A fixed voltage drive can cope with it, too.
Pressure Medium	Non-corrosive Gas		
Type of Pressure	Gauge or Absolute		
<b>Electrical Performance (Ta=25°C Icc=0.5mA)</b>			
Offset Voltage	±10	mV	
Span Voltage	±40~±100	mV	FS=0 to Max.pressure.
Bridge Resistance	7000~10000	Ω	
Pressure and Linearity	±0.3	%FS	FS=0 to Max.pressure.
Pressure and Hysteresis	±0.7	%FS	FS=0 to Max.pressure.
Offset Temperature Characteristics	±5	%FS	FS=0 to Max.pressure.
Span Temperature characteristics	±2.5	%FS	Temperature characteristics are for 0~50°C.

※ Customer specifications are acceptable.

## ■ Model Designation

HPD - 50 G (- S01)

