

Wireless Remote Control

429MHz

920 MHz
Replaceable!

NH Series

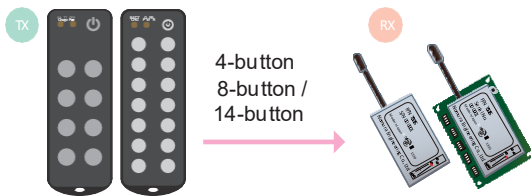
TS02NH (Single Direction)
TS02NH2 (Dual Direction)



Stable response,
Heavy-duty type suitable for long distances.

- Splash-proof and dust-proof body (available in black or white)
- Supports rapid charging, over 24 hours of continuous transmission (one-way)
- Rich firmware options (continuous transmission, toggle operation, ACK function, etc.)
- Modem type supports serial output from the receiver
- Supports customization of boards and labels for 1 to 14 buttons
- Standard Type: Line-of-sight range over 300m, Long-range Type (-K): Over 1km

Unidirectional Type (Continuous Transmission/Toggle Operation)



Continuous transmission

The corresponding receive output remains active while the button is pressed.

Toggle Operation

1-8 Toggle: Repeatedly turns on/off each time the button is pressed.

2-4 Toggle: Two buttons are paired to switch on/off.

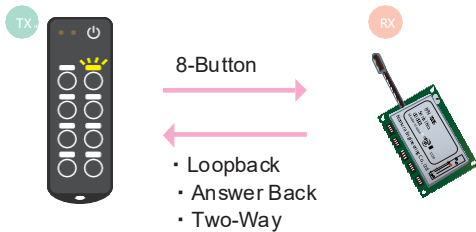
When a button is pressed, the pressed contact turns on and the other turns off.

AC Power Charging Adapter
NH-CHG



Magnetic attachment for one-touch connection
AC Input: 100~240V AC
DC Output: 5V DC, 1A max.
Connector: NH Series Specific
Cable Length: 1.7m
Dimensions/Weight: 36×68×26mm · Approx. 70g PSE, UL Standards, CE certified RoHS Compliance

Bidirectional Type (Loopback / Answerback / Continuous Transmission / Toggle Operation)



Loopback

Returns an ACK to the transmitter indicating successful reception. Allows confirmation of wireless communication success/failure from a remote location.

Answer Back

Returns the input signal from the 8-point receiver to the transmitter. Allows remote confirmation of the receiver-side load operation.

Bidirectional Continuous Transmission

Continuous bidirectional transmission is performed at all times.

Outputs each other's input signals to the other side.

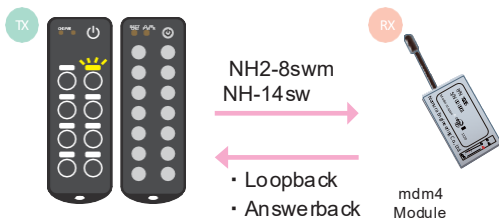
Original Label

Custom PCB layouts and original labels are possible!



*PCB customization such as button placement is also possible. Initial setup fees apply.

Unidirectional/Bidirectional Type (Serial Output)



Unidirectional Continuous Transmission Modem

Receives data via the mdm4 module and can output transmitter ID, SW information, RSSI information, etc., via serial output.

Loopback/Answerback

Control the mdm4 module by an external microcontroller to build a loopback/answerback and answerback system.

TS92NH / TS92NH2

920 MHz module type is now available!



Electrical Specifications ;

Transmit Frequency	429 MHz band	Switch Life	Endurance test: Over 100,000 cycles	Dimensions	Approx. 44 × 129 × 15.5 (mm)
Transmit power	10mW (+10/-30%)	Built-in battery	2 AAA Ni-MH batteries (Not replaceable by the user)	Weight	Approx. 93g
Multi-channel access (automatic channel capture)		Operating time	Over 24 hours (unidirectional continuous transmission)	Compliant Standards	ARIB STD-T67 Technical Standards Compliance Certification Obtained RoHS Compliance
8sw One-Way: 5 Channels		Charging time	Approx. 3 hours (from empty state)	Dedicated charger	NH-CHG / NH-CHGs / NH-CHGcar
14SW Bidirectional: 3 channels		Charge cycles	Over 1,500 times		
Operating Temperature -20 to 70°C (No Condensation)		Dustproof and splashproof	IP54 equivalent		

NH/NH2 Series Receiver Introduction

* For contact output types, there are two options: N: Open-drain output, P: Power supply output.

Nomura Engineering Co., Ltd.

Unidirectional (4-way, 8-way)



· 02-8swRXBD
8-contact One-Touch Terminal Block Board*

Unidirectional (4-wire, 8-wire)



· 02-8swRXBDS
Screw Terminal Block Board for 8 Contacts*

Unidirectional (4SW, 8SW)



· 02-8swRXRL-NWP
Waterproof case included
8-contact relay terminal board

Unidirectional (4-way, 8-way)



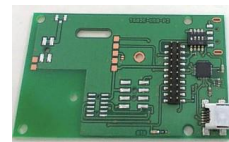
· 02-8swRX-NWP
In waterproof case (IP65 equivalent) 8-contact one-touch terminal block board*

Bidirectional/Unidirectional (8-way modem, 14-way)



· 02-SerialBD
Serial Communication Board
(Supports RS-232C/RS-485/USB serial)

Bidirectional/Unidirectional (8-pin modem, 14-pin)



· 02-USB-BD
Serial Communication Board
(USB serial compatible)

Bidirectional/Unidirectional (14-pin)



· 02-16swRX
16-Contact One-Touch Terminal Block Board*
(16-switch/loopback/8-answerback, bidirectional compatible)

Bidirectional/Unidirectional (14-pin)



02-16swRX-NWP
Waterproof case included
16-Contact One-Touch Terminal Block Board*
(16SW/Loopback/8 Answerback, Bidirectional Support)

Bidirectional/Unidirectional (14-pin)



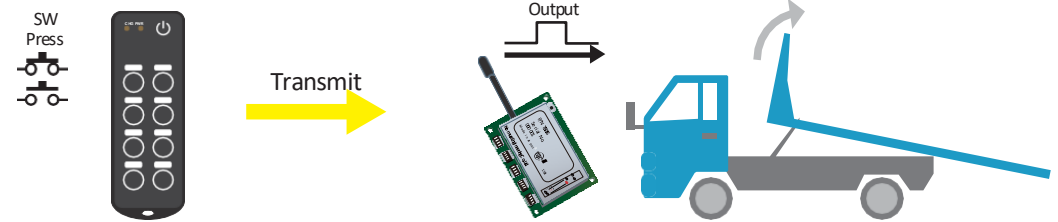
· 02-16swRL-NWP
Waterproof Case Included
16-Contact Relay Terminal Block Board
(16-switch/loopback/8-answerback, bidirectional support)

NH/NH2 Series Operation Overview

Nomura Engineering Co., Ltd.

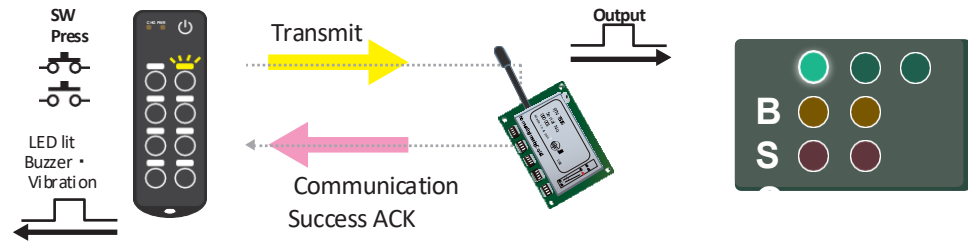
4-sw, 8-sw, 14-sw (unidirectional)

Selectable from Continuous Transmission, 1-8 Toggle, 2-4 Toggle.



Loopback -LP (Bidirectional)

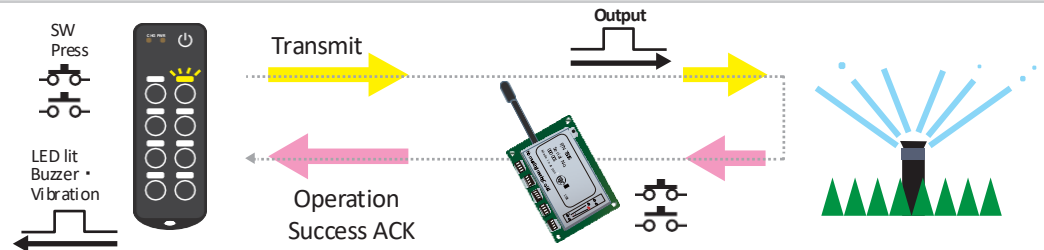
Returns an ACK for successful communication to the remote control.
Output hold time setting selectable from 1-8 toggle or 2-4 toggle.



Answer Back -AN (Bidirectional)

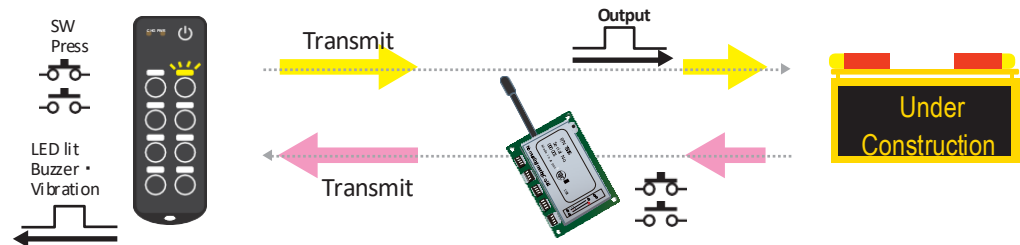
Receives a contact signal from the receiver-side load and returns an ACK of successful operation to the remote control. (Answerback standby time setting)

Selectable from 1-8 toggle or 2-4 toggle.



Two-Way Communication -SKS

The remote control and receiver continuously communicate bidirectionally. Continuous transmission.



Call Pager

Operates as a receiver.

(Also as a receiver for loopback/answerback)

