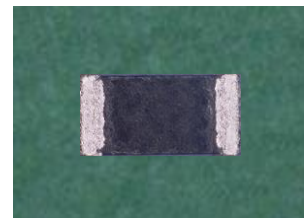


Model No.

PCR**



■ Features

Our proprietary materials and structure provide excellent surge withstand voltage and Pulse resistance.

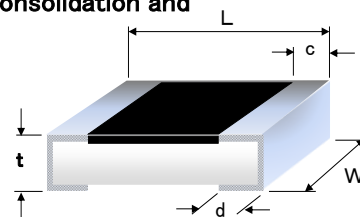
High-power Chip Resistors.

Industry-leading rated power guarantee is possible.

0.20W for 1005 Size, 0.30W for 1608 Size, 0.50W for 2012 Size

We guarantee reduced management workload through component consolidation and downsizing, achieving

VA (reduction in component costs and mounting area) is achievable.



■ Dimensions

(Unit: mm)

Model	L	W	t	c	d
PCR10	1.00±0.05	0.50±0.05	0.35±0.05	0.20±0.10	0.25±0.20
PCR16	1.60±0.15	0.80+0.20/-0.10	0.50+0.15/-0.05	0.25±0.20	0.25±0.20
PCR20	2.00+0.20/-0.10	1.25+0.20/-0.10	0.50+0.15/-0.05	0.40±0.20	0.40±0.20
PCR32	3.20+0.10/-0.15	1.60+0.10/-0.15	0.55±0.15	0.40±0.20	0.50±0.20

■ Specifications

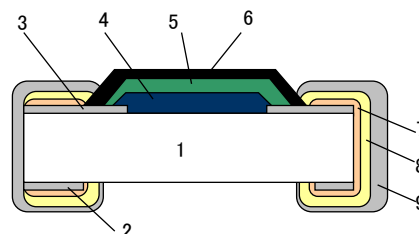
Model	Rated Power (W)	Resistance Value Tolerance	Resistance Value Range (Ω)	TCR (ppm/°C)	Max. Working voltage	Max. Overload voltage
PCR10	0.20	J(±5.0%)	1~9.1	-100~+600	50V	100V
PCR16	0.30	J(±5.0%)	10 to 1M	±200	150V	200V
PCR20	0.50	F(±1.0%)		±100	150V	200V
PCR32	0.75	D(±0.5%)		200V	400V	

※The bolded sections are common

*Operating temperature range: -55 to +155° C

■ Construction

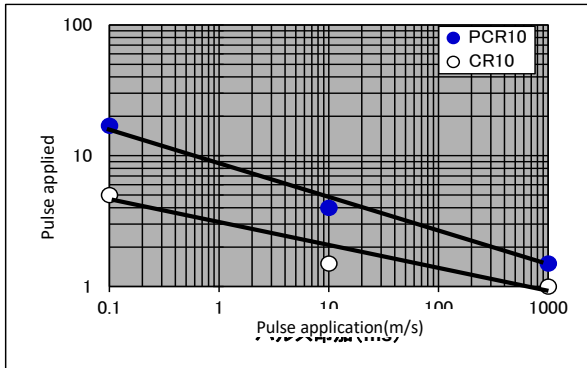
No.	Component Name
1	Ceramic Substrate
2	Back Electrode
3	Surface Electrode
4	Resistor
5	Protective coat I
6	Protective coat II
7	Side Electrode
8	Ni Plating
9	Sn Plating



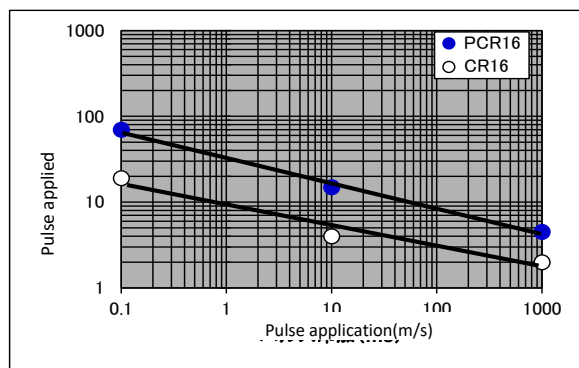
*Design and specifications are subject to change without notice. Please confirm before purchase and use.

Single Pulse Limit Curve

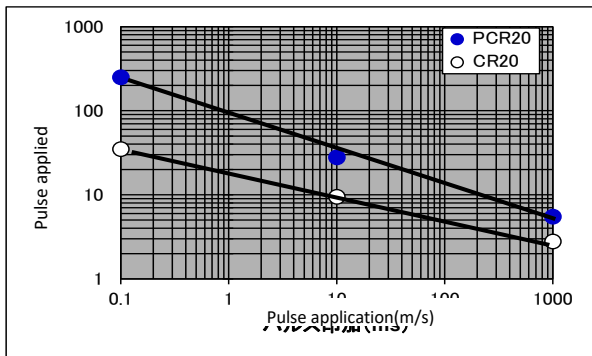
PCR10 [Reference Value]



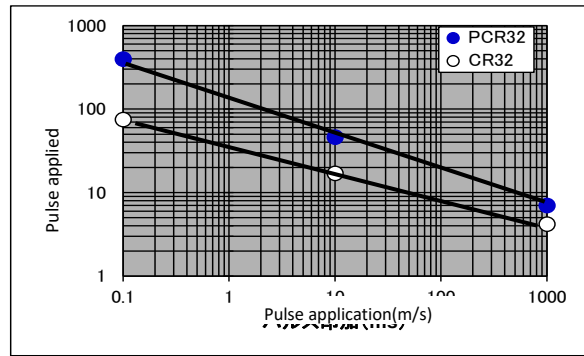
PCR16 [Reference Value]



PCR20 [Reference Value]



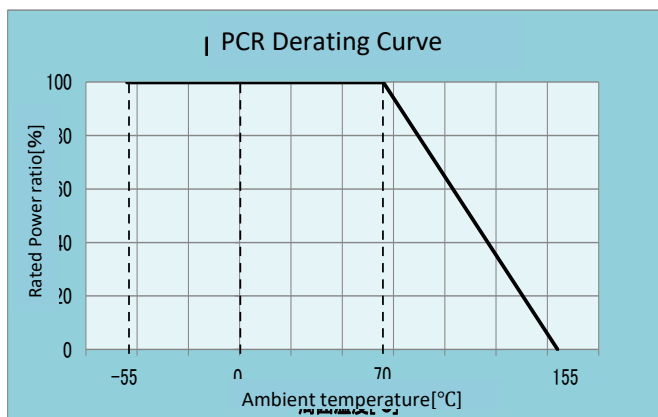
PCR32 [Reference Value]



PCR exhibits excellent pulse resistance. Approximately three times the resistance compared to standard products.

Power rating

When used at ambient temperatures of 70°C or higher, Reduce the Rated Power according to the load reduction curve on the right.



*Design and specifications are subject to change without notice. Please confirm before purchase and use.