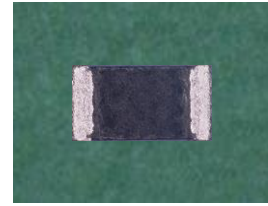


Model No.

SPCR20



■ Features

Featuring our proprietary material and structure, it offers excellent surge withstand voltage and Pulse resistance.

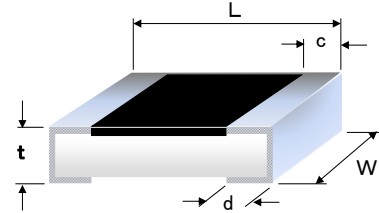
High-power Chip Resistors.

enabling industry's highest rated power guarantee.

guarantees a **Rated Power of 0.60W in a 2012 Size,**

Reduces management workload through component consolidation and guarantees a rated power of 0.60W in a downsized VA (reduction in component costs and mounting area) is possible.

We support Reflow and Flow soldering.



■ Dimensions

(Unit: mm)

Model	L	W	t	c	d
SPCR20	2.00±0.20/-0.10	1.25±0.20/-0.10	0.50±0.15/-0.05	0.30±0.20	0.50±0.20

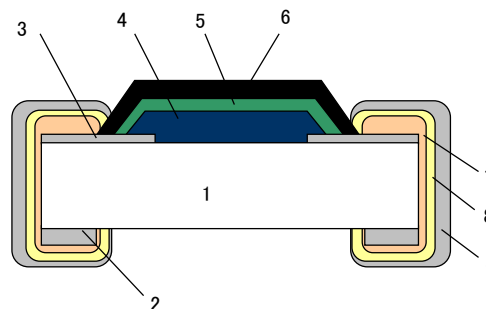
■ Specifications

Model	Rated Power (W)	Resistance Value Tolerance	Resistance Value Range (Ω)	TCR (ppm/° C)	Max. Working voltage	Max. Overload voltage
SPCR20	0.60	J(±5.0%)	10 to 1M	±200	200V	400V
		D(±0.5%)		±100		
		F(±1.0%)				

*Operating temperature range: -55 to +155° C

■ Construction

No.	Component Name
1	Ceramic Substrate
2	Back Electrode
3	Surface Electrode
4	Resistor
5	Protective coat I
6	Protective coat II
7	Side Electrode
8	Ni Plating
9	Sn Plating



*Design and specifications are subject to change without notice. Please confirm before purchase and use.