

Model No.

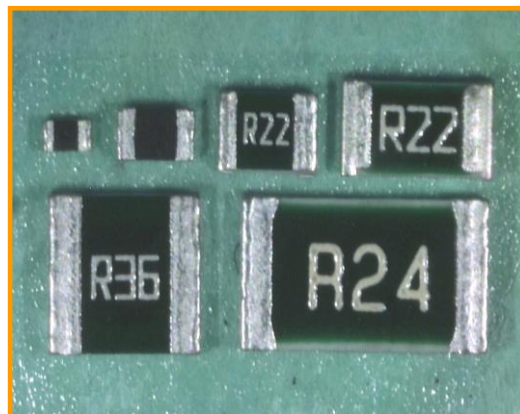
LCRS**

■ Features

• By adding [special protective materials through a unique structure](#),
[Excellent sulfidation characteristics.](#)

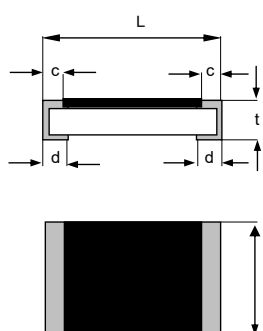
Compatible with [Reflow and Flowsoldering.](#)

• Compliant [with European RoHS Compliance.](#)



■ Dimensions

(Unit: mm)



Model	L	W	t	c	d
LCRS10	1.00±0.05	0.50±0.05	0.35±0.05	0.30±0.10	0.25±0.10
LCRS16	1.60±0.15	0.80 +0.20/-0.10	0.50 +0.15/-0.05	0.40±0.20	0.25±0.20
LCRS20	2.00+0.20/-0.10	1.25 +0.20/-0.10	0.50 +0.15/-0.05	0.45±0.20	0.40±0.20
LCRS32	3.20 +0.10/-0.15	1.60 +0.10/-0.15	0.55 +0.15/-0.05	0.65±0.20	0.50±0.20
LCRS35	3.20 +0.10/-0.15	2.60 +0.10/-0.15	0.55 +0.15/-0.05	0.60±0.20	0.50±0.20
LCRS50	5.00±0.15	2.50±0.15	0.56±0.15	0.70±0.25	0.60±0.20

■ Specifications

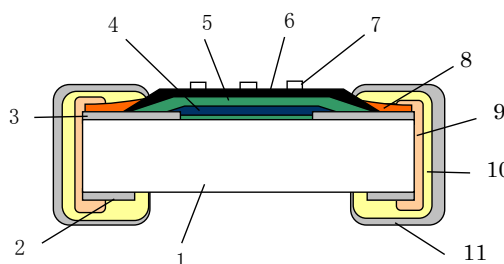
Product Name	Rated Power (W)	Resistance Value Tolerance	Resistance Value Range (Ω)	TCR (ppm/° C)	Max. Working voltage	Max. Overload voltage
LCRS10	0.100	G-grade (±2%)	0.20~0.91	±300	V=√(P·R)	100V
		J-grade (±5%)				
LCRS16	0.100	G-grade (±2%)	0.20~0.91	±300		
		J-grade (±5%)				
LCRS20	0.125	F-grade (±1%)	0.20~0.91	±200		
LCRS32	0.250	G-grade (±2%)	0.10~0.91			
LCRS35	0.500	J-grade (±5%)				
LCRS50	0.750	G-grade (±2%)	0.20~0.91	±200		
		J-grade (±5%)				

※The bolded sections are common

*Operating temperature range: -55 to +155° C

■ Construction

No.	Component Name
1	Ceramic Substrate
2	Back Electrode
3	Surface Electrode
4	Resistor
5	Protective coat I
6	Protective coat II
7	Marking
8	Protective coat III
9	Side Electrode
10	Ni Plating
11	Sn Plating



*Design and specifications are subject to change without notice. Please confirm before purchase and use.