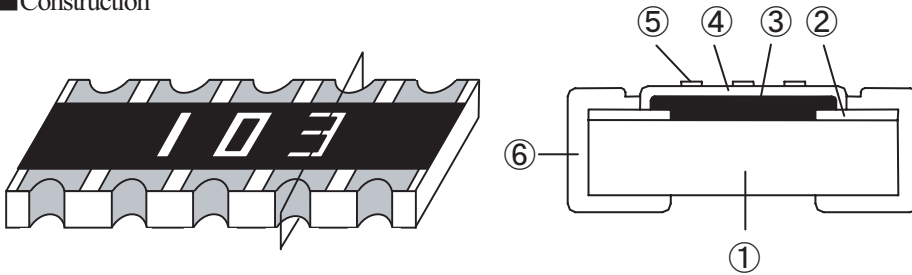


## Concave Electrode Type : Model No. NCR3A8 (NCR3110A), NCR3B8 (NCR3110B)

### Construction



\*1 ( ): Conventional Model No.

Symbol	Material List	
①	Alumina substrate	
②	Conductor	
③	Resistive film	
④	Over coat	
⑤	Marking	NCR3A8 Orange
		NCR3B8 White
⑥	Side termination	

### Model Designation

\*1

NCR3A8 (NCR3110A)      103      J      E  
 ① Model No.      ② Resistance      ③ Tolerance      ④ Packaging

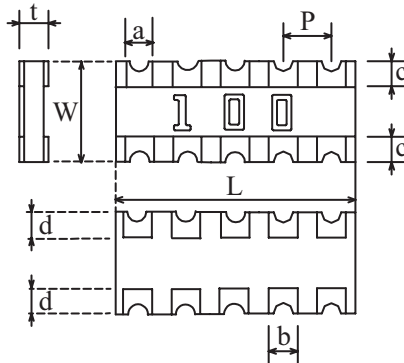
① Model No.*1
NCR3A8 (NCR3110A)
NCR3B8 (NCR3110B)

② Resistance
3 digit (Resistance) (Marking)
10kΩ → 103

③ Tolerance(%)	
Symbol	Tolerance
J	± 5

④ Packaging	
Symbol	Packaging
B	Bulk
E	Embossed taping

### Dimension



Model No.	L	W	a	b
NCR3A8	6.40±0.20	3.10±0.20	0.60±0.15	0.50±0.20
NCR3B8				

Model No.	c	d	p	t
NCR3A8	0.50±0.30	0.50±0.30	(1.27)*2	0.55±0.10
NCR3B8				

\*2 ( ): Reference value

### Rating

*1 Model No.	Rated Wattage (70°C)	Tolerance (%)	Resistance Range E-12 Series (Ω)	T.C.R. (ppm/°C)	Max. Working Voltage (V)	Max. Overload Voltage (V)	Circuit
NCR3A8 (NCR3110A)	0.063W/Element	J:± 5	100 ~ 470k	±250	50	100	
NCR3B8 (NCR3110B)							

Operating temperature range : -55°C ~ +155°C

### Power rating, Packaging

Refer "Dimension, Packaging, etc."