



Current Detecting Metal Plate Resistor

Model No. LR

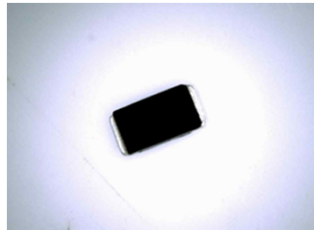
■ Features

- Low T.C.R.
- Pb-free and halogen-free

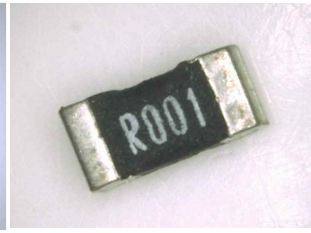
■ Applications

- Current Detection for
- Module for Automotive
 - Module for Industrial Equipment
 - Inverter/Converter

■ Appearance



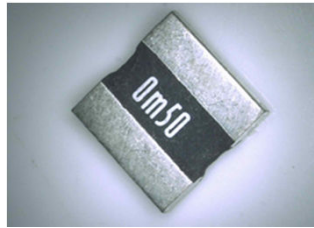
LR20



LR32



LR641/642/643



LR68



LR72



LR1145

■ Type Designation

Ex)LR32 R010 FE

LR32	R010	F	E
Type	Resistance	Tolerance	Packaging
3216 size	10mΩ	F: ±1%	Embossed taping

■ Specifications

Type	Rated Power	Resistance Value	T.C.R.	Tolerance	Operating Temp
LR20	0.5W	$3 \leq R \leq 15m\Omega$	$\leq \pm 100ppm/^{\circ}C$	Class F (±1%)	-55~+150°C
LR32	1W	$1 \leq R < 10m\Omega$	$\leq \pm 100ppm/^{\circ}C$	Class F (±1%)	-55~+155°C
		$10 \leq R \leq 50m\Omega$	$\leq \pm 50ppm/^{\circ}C$		
LR641	1W	$1 \leq R < 10m\Omega$	$\leq \pm 100ppm/^{\circ}C$	Class F (±1%)	-55~+155°C
		$10 \leq R \leq 100m\Omega$	$\leq \pm 50ppm/^{\circ}C$		
LR642	2W	$1 \leq R < 10m\Omega$	$\leq \pm 100ppm/^{\circ}C$	Class F (±1%)	-55~+155°C
		$10 \leq R \leq 75m\Omega$	$\leq \pm 50ppm/^{\circ}C$		
LR643	3W	$1 \leq R \leq 10m\Omega$	$\leq \pm 100ppm/^{\circ}C$	Class F (±1%)	-55~+155°C
LR68	3W	0.25、0.5、1.0mΩ	$\leq \pm 200ppm/^{\circ}C$	Class F (±1%)	-55~+155°C
		1.5、2.0、2.5、3.0mΩ	$\leq \pm 100ppm/^{\circ}C$		
LR72	3W	$4 \leq R \leq 100m\Omega$	$\leq \pm 50ppm/^{\circ}C$	Class F (±1%) Class G (±2%) Class J (±5%)	-55~+155°C
LR1145	5W	$1 \leq R < 10m\Omega$	$\leq \pm 100ppm/^{\circ}C$	Class F (±1%)	-55~+155°C
		$10 \leq R \leq 120m\Omega$	$\leq \pm 50ppm/^{\circ}C$		



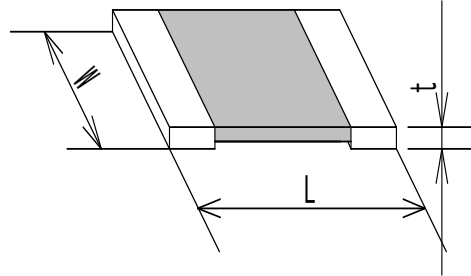
Current Detecting Metal Plate Resistor

Model No. LR

■ Dimensions

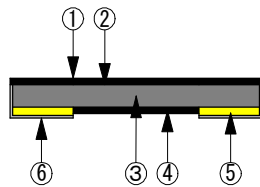
Unit: mm

Type	L	W	t
LR20	2.0±0.3	1.25±0.3	0.4 Max
LR32	3.2±0.3	1.6±0.3	0.9 Max
LR641	6.3±0.3	3.2±0.3	1.1 Max
LR642	6.3±0.3	3.2±0.3	1.1 Max
LR643	6.3±0.4	3.2±0.3	1.1 Max
LR68	6.8±0.3	6.5±0.3	1.4 Max
LR72	6.7±0.3	7.2±0.3	1.3 Max
LR1145	11.4±0.3	6.9±0.3	1.8 Max



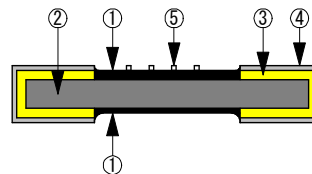
■ Product Description

LR20



No	Part
①	Surface coat (Polyimide)
②	Adhesive
③	Metal alloy for resistor
④	Over Coat
⑤	Electrode (Cu)
⑥	Terminal plating (Ni-under plated, Sn-surface plated)

LR32, 641, 642, 643, 68, 72, 1145



No	Part
①	Over Coat
②	Metal alloy for resistor
③	Electrode (Cu)
④	Terminal plating (Ni-under plated, Sn-surface plated)
⑤	Marking