

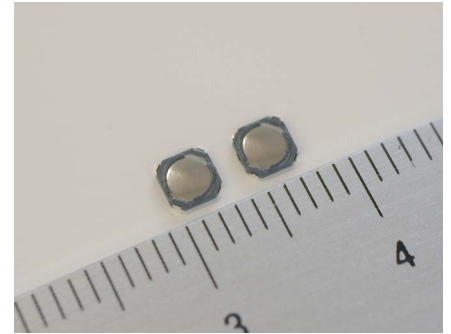


Tactile Switches 3.2mm × 3.2mm Surface Mounting Type

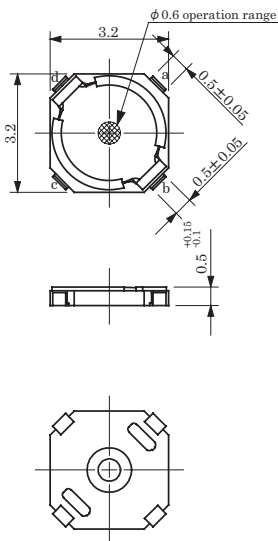
New

■ Features

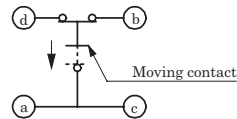
- Outline size 3.2mmx3.2mm, super low-profile 0.5mm
- Reflow soldering
- Supplied in 8mm wide embossed taping



■ Dimensions (Unit: mm)

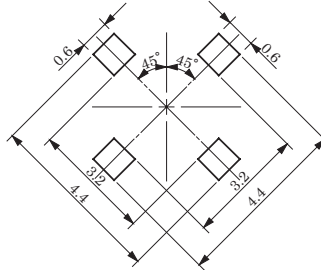


Circuit diagram



Please note that between b-d is not always connected. So, please do not use it as jumper line.

Recommended footprint (component-side view)



■ Specification

Item	Specification	Unit	Note
Operating Temperature Range	-20~+70	°C	
Storage Temperature Range	-40~+85	°C	
Type of Operation	Tactile Feedback		
Contact Configuration	Push-On Momentary, 1 Pole-1 Throw		
Power Rating	Max. 50mA 12VDC		
Contact Resistance	Max. 100	mΩ	
Insulation Resistance	100MΩ Min. at 100VDC		
Dielectric Withstand Voltage	250 VAC for 1 Minute		
Contact Bounce	Max. 10	ms	
Operating Force	0.98±0.49	N	A Type
Operating Force	1.57±0.49	N	B Type
Return Force	Min. 0.10	N	A Type
Return Force	Min. 0.49	N	B Type
Travel	0.2±0.1	mm	

■ Model Designation

